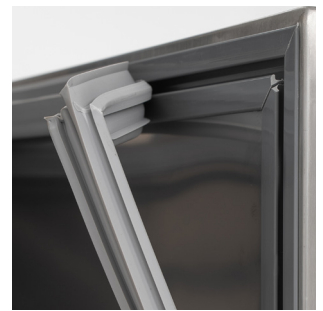


LBC2NU


Blizzard

STAINLESS STEEL REFRIGERATED COUNTER WITHOUT UPSTAND

Description

With the same versatility of its upstand equipped sibling the HBC/LBC-NU range features heavy duty castors, replaceable door gaskets, self closing doors and more!

Featuring even air distribution via a ducted system, which allows ventilated cooling. Temperature can be monitored and controlled using a conveniently positioned dixell controller and ensure whatever you need to store away in these units will stay at its very best for as long as possible.



Features

AISI 304 Stainless steel exterior & interior

Available in both refrigerated & freezer variations

Even air distribution by ducted system

Heavy duty castors as standard

Internal corners rounded for easy cleaning

1 x adjustable GN1/1 shelf per door

Self closing doors with dwell position

Replaceable door gasket

MODEL	DOORS	GROSS CAPACITY	REFRIGERANT	TEMPERATURE RANGE	DIMENSIONS (mm)	ENERGY RATING	POWER USAGE	KWH/ANNUM	POWER	WEIGHT (kg)
HBC2NU	2	282L	R290	+2°C / +8°C	H850 x W1360 x D700	C	220W	822	13amp	128
HBC3NU	3	417L	R290	+2°C / +8°C	H850 x W1795 x D700	C	230W	1162	13amp	154
HBC4NU	4	553L	R290	+2°C / +8°C	H850 x W2230 x D700	D	345W	1741	13amp	185
LBC2NU	2	282L	R290	-18°C / -22°C	H850 x W1360 x D700	E	520W	2851	13amp	133
LBC3NU	3	417L	R290	-18°C / -22°C	H850 x W1795 x D700	E	560W	3357	13amp	179
LBC4NU	4	553L	R290	-18°C / -22°C	H850 x W2230 x D700	E	650W	3951	13amp	196

OPTIONAL EXTRAS (Applicable Units)

Shelf & guides pair

Gasket

OPTIONAL EXTRAS (Applicable Units)

2 Bay drawer pack, supply & fit (HBC2NU,HBC3NU,HBC4NU)

3 Bay drawer pack, supply & fit (HBC2NU,HBC3NU,HBC4NU)