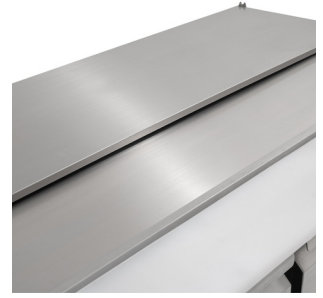


KXCC2-PREP



COMPACT SOLID DOOR STAINLESS STEEL SALADETTE

Description

The perfect budget beating compact saladette from Koldbox promises great things for an incredibly low price! With a full GN well cover hinged for easy access plus a polypropylene cutting board installed as standard.

Make the most of your refrigerated storage space thanks to the included shelf per door plus benefit from key features such as internal rounded corners, adjustable feet, replaceable door gaskets, 35mm insulation and removable condenser filter.

Features

- 201 stainless steel exterior & interior
- Internal corners rounded to aid cleaning
- 1 x adjustable GN1/1 shelf per door
- GN sized well accepts containers - Max depth 150 mm
- Hinged lid over GN well
- 135mm deep polypropylene cutting board
- 35mm insulation
- Removable condenser filter for cleaning



MODEL	CONTAINER CAPACITY*	GROSS CAPACITY	REFRIGERANT	TEMPERATURE RANGE	DIMENSIONS (mm)	POWER USAGE	POWER	WEIGHT (kg)
KXCC2-PREP	2 x GN1/1 + 3 x GN1/6	240L	R600a	+2°C / +8°C	H877 x W903 x D700	170W	13amp	80
KXCC3-PREP	4 x GN1/1	368L	R290	+2°C / +8°C	H877 x W1368 x D700	240W	13amp	130

*Find our full range of gastronorm pans on page 5.

OPTIONAL EXTRAS (Applicable Units)

- Shelf & guides pair
- Castor kit, supply & fit (KXCC2-PREP)
- Castor kit, supply & fit (KXCC3-PREP)
- Gasket