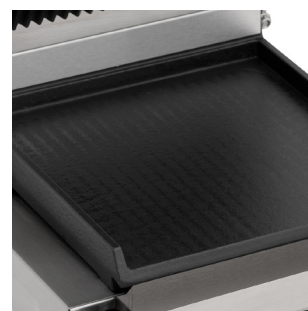


BRRCG1


**Blizzard**™

## SINGLE AND DOUBLE CONTACT STAINLESS STEEL GRILLS

### Description

Whether you're grilling, frying or heating something up, the cast iron plates on the BR range will ensure a sizzling hot experience every time. Counter balanced to ensure the units are stable without the fear of them tipping over the compact contact grills are perfect for a small kitchen looking to save a little space.

Built with 304 stainless steel and featuring integrated manual temperature controls and indication LED lighting you can be sure this small form contact grill fits the part too!

### Features

- Stainless steel construction
- Available in both ribbed and smooth configurations
- Supplied with wire cleaning brush
- Cast iron plates
- Counter balances top plates
- Removable drip tray

**1**  
YEAR  
WARRANTY

MODEL	DESCRIPTION	TEMPERATURE	DIMENSIONS (mm)	POWER USAGE	POWER	WEIGHT (kg)
BRSCG1	Single - Top Ribbed, Bottom Smooth	+50°C / +300°C	H210 x W310 x D395	1800W	13amp	16
BRRCG1	Single - Top Ribbed, Bottom Ribbed	+50°C / +300°C	H210 x W310 x D395	1800W	13amp	16
BRSCG2	Double - Top Ribbed, Bottom Smooth	+50°C / +300°C	H210 x W570 x D395	3600W	2 x 13amp	30
BRRCG2	Double - Top Ribbed, Bottom Ribbed	+50°C / +300°C	H210 x W570 x D395	3600W	2 x 13amp	30